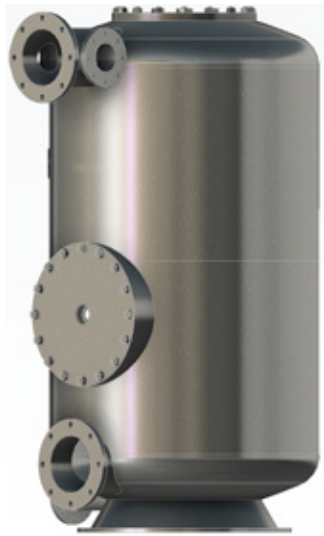


Atecpool Reg Silver Stainless Steel Filter

Atecpool Reg-X
Filtro Regenerativo

Atecpool Reg-X
Filtre Régénératif



RF-316L

Flow rates between
15 and 540 m³/h
at between
2.5 and 4.5 m³/h/m²
filter rates



Easy Touch
Easy Run



400 mm diameter TO 1600 mm diameter

Atecpool Reg Silver RF-316L Series Stainless Steel Filter

Atecpool Reg Silver RF-316L Specifications

- Supply of a regenerative filter of micronized perlite filter media:
- RF-316L, flow rates between 15 and 540 m³/h at between 2.5 and 4.5 m³/h/m² filter rates, inlet/outlet D75-D315 mm, filter area of 6.0 to 120.0m², max. working pressure 6 bar, max. differential pressure 0.9 bar, perlite weight 2 to 32 kg.
- Built in AISI 316L stainless steel. PN6
- Hoses made with AISI316 stainless steel core covered with high tenacity polymer fiber. EPDM gaskets.
- Patented automatic self-cleaning and rinse system.
- Patented automatic active perlite regeneration system without vibrations or impacts.
- Automatic perlite coating system.
- Supply of the filter with its control panel, SIEMENS S7 PLC, display and control screen (HMI SIEMENS 7-inch), instrumentation and sensors.
- Supply of high performance blower pump for regeneration system, and a vacuum machine for perlite loading.
- Polyethylene strainers for self-cleaning and regeneration systems.
- 2-year warranty against manufacturing defects.



Installation example - Turtle Island, South Korea

Model	Height	Diameter	Weight	Volume	Operating Weight	Filter Area	Minimum Flow rate	Minimum Filter rate	Maximum Flow rate	Maximum Filter rate	Perlite Weight	In / Out	Drain / Recirculation /Rinse	Footprint
	(mm)	(mm)	(kg)	(l)	(kg)	(m ²)	(m ³ /h)	(m ³ /h/m ²)	(m ³ /h)	(m ³ /h/m ²)	(kg)	(mm)	(mm)	(m ²)
RF-316L-400	1,800	400	260	180	440	6.0	15	2.5	27	4.5	2	D75	1 ½" Ball	0.13
RF-316L-600	1,900	600	330	420	750	15.8	40	2.5	71	4.5	4	D125	2" Ball	0.28
RF-316L-800	1,950	800	545	770	1,315	30.9	77	2.5	139	4.5	9	D160	D75	0.50
RF-316L-1000	2,050	1,000	805	1,270	2,075	52.0	130	2.5	234	4.5	15	D200	D110	0.79
RF-316L-1200	2,100	1,200	1,125	1,900	3,025	68.2	170	2.5	307	4.5	18	D250	D125	1.13
RF-316L-1400	2,200	1,400	1,400	2,480	3,880	93.0	232	2.5	418	4.5	27	D315	D160	1.54
RF-316L-1600	2,200	1,600	1,720	3,540	5,260	120.0	300	2.5	540	4.5	32	D315	D160	2.01