

*Inspired
by Water*

**VALVES &
UNIONS**





ATECPOOL VALVES & UNIONS

ATECPOOL created a new line of valves as an evolution with considerable improvements at a functional and ergonomic level.

The new nuts allow a better grip for tightening. The O-rings on the seats provide high torque stability and the design of the seats ensures smooth operation.



The new lever has a more ergonomic design and is bolted to prevent vandalism. Finally, the new stems have been optimised for increased strength and easier motorisation. It has been completely revised to remain a reference valve that still offers maximum efficiency and reliability.

PVC - U Ball Valves

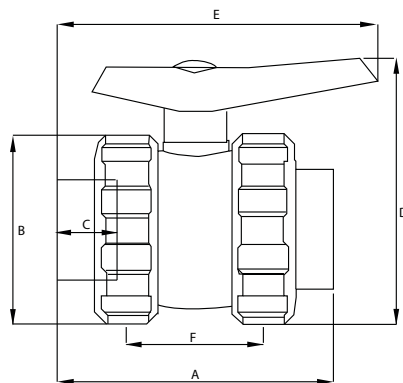
PE-EPDM

Atecpool Ball Valve

PE ball seat, EPDM o-rings. Solvent socket.



Code	Description	PN	Net W. (kg)	Volume (m³)	Gross W. (kg)	Total Units (1 box)
11280	Ball Valve ½"	PN16	0.158	0.01553	6.65	40
11281	Ball Valve ¾"	PN16	0.198	0.02244	8.42	40
11282	Ball Valve 1"	PN16	0.343	0.03129	10.86	30
11283	Ball Valve 1 ¼"	PN16	0.579	0.03129	12.56	20
11284	Ball Valve 1 ½"	PN16	0.860	0.03129	13.44	15
11285	Ball Valve 2"	PN16	1.372	0.03682	14.19	10
11286	Ball Valve 2 ½"	PN10	2.698	0.03129	11.37	4
11287	Ball Valve 3"	PN10	4.351	0.02244	9.19	2
11288	Ball Valve 4"	PN10	6.445	0.04460	13.62	2



Code	Size	DN	A (mm)	B (mm)	C (mm)	D (mm)	E (mm)	F (mm)
11280	½"	15	84	52	16	78	92	47
11281	¾"	20	96	59	19	84	92	51
11282	1"	25	117	70	23	97	138	66
11283	1 ¼"	32	132	84	25	128	160	72
11284	1 ½"	40	149	99	31	142	169	77
11285	2"	50	173	121	38	165	188	90
11286	2 ½"	65	215	151	45	222	281	121
11287	3"	80	255	175	51	244	301	141
11288	4"	100	267	210	61	307	426	155

PVC - U Check Valve

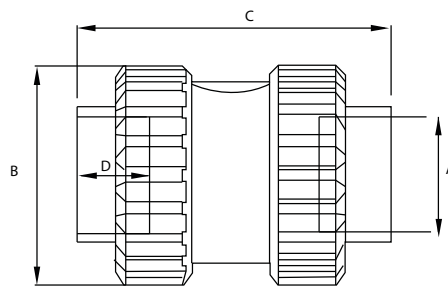
With Spring

Atecpool Check Valve

EPDM o-rings. Solvent socket. Stainless steel 304 spring.



Code	Description	PN	Net W. (kg)	Volume (m ³)	Gross W. (kg)	Total Units (1 box)
16081	Check Valve ½"	PN16	0.133	0.01553	5.77	40
16082	Check Valve ¾"	PN16	0.174	0.02243	7.47	40
16083	Check Valve 1"	PN16	0.288	0.02244	9.14	30
16084	Check Valve 1 ¼"	PN16	0.481	0.02244	10.15	20
16085	Check Valve 1 ½"	PN16	0.706	0.02244	8.71	12
16086	Check Valve 2"	PN16	1.152	0.03129	11.84	10
16087	Check Valve 2 ½"	PN10	2.218	0.03129	9.56	4
16088	Check Valve 3"	PN10	3.484	0.02244	7.78	2
16089	Check Valve 4"	PN10	3.764	0.02244	8.38	2



Code	Size	DN	A (mm)	B (mm)	C (mm)	D (mm)
16081	½"	15	20	52	85	16
16082	¾"	20	25	59	94	19
16083	1"	25	32	69	121	23
16084	1 ¼"	32	40	84	133	27
16085	1 ½"	40	50	99	150	32
16086	2"	50	63	120	176	39
16087	2 ½"	65	75	151	218	45
16088	3"	80	90	175	260	52
16089	4"	80	110	179	290	62

Butterfly Valve

Electric Actuation

Butterfly Valve with Electrical Actuator

Voltage options 12VDC. EPDM U-PVC



Code	Description	Net W. (kg)	Volume (m ³)	Gross W. (kg)	Total Units (1 box)
09099	Buterfly Valve w/Electric Actuator 63mm	3.288	0.03100	3.65	1
09100	Buterfly Valve w/Electric Actuator 75mm	3.498	0.03100	3.86	1
09862	Buterfly Valve w/Electric Actuator 90mm	4.300	0.04460	5.21	1
09863	Buterfly Valve w/Electric Actuator 110mm	4.740	0.04460	5.47	1
09864	Buterfly Valve w/Electric Actuator 125mm	5.190	0.06150	6.11	1
09865	Buterfly Valve w/Electric Actuator 140mm	8.575	0.06150	9.50	1
09866	Buterfly Valve w/Electric Actuator 160mm	8.978	0.08678	10.00	1
09106	Buterfly Valve w/Electric Actuator 200mm	11.444	0.06149	14.24	1
09107	Buterfly Valve w/Electric Actuator 250mm	16.754	0.16000	19.21	1

Butterfly Valve with Pneumatic Actuator

Simple effect pneumatic actuation



Code	Description	Net W. (kg)	Volume (m ³)	Gross W. (kg)	Total Units (1 box)
09109	Buterfly Valve w/Pneumatic Actuator 63mm	4.668	0.03129	5.24	1
09110	Buterfly Valve w/Pneumatic Actuator 75mm	4.295	0.02243	4.79	1
09873	Buterfly Valve w/Pneumatic Actuator 90mm	5.226	0.02243	5.71	1
09874	Buterfly Valve w/Pneumatic Actuator 110mm	9.705	0.04460	10.44	1
09875	Buterfly Valve w/Pneumatic Actuator 125mm	9.333	0.06150	10.31	1
09876	Buterfly Valve w/Pneumatic Actuator 140mm	12.636	0.06150	13.48	1
09877	Buterfly Valve w/Pneumatic Actuator 160mm	14.433	0.04460	15.16	1
09116	Buterfly Valve w/Pneumatic Actuator 200mm	17.137	0.06150	18.12	1
09117	Buterfly Valve w/Pneumatic Actuator 250mm	25.515	0.06879	27.13	1

Union Solvent Socket

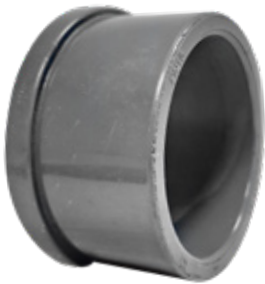
Union Coupling Solvent Socket

Union Solvent Socket with PVC Nut, 2 Pieces



Code	Description	Volume (m ³)	Net W. (kg)
01909	Union Solvent Socket w/Nut 50mm	0.0312	0.193
01919	Union Solvent Socket w/Nut 63mm	0.0446	0.311

Union Solvent Socket



Code	Description	Volume (m ³)	Net W. (kg)
01855	Union Solvent Socket 1 1/2"	0.0312	0.085
95084	Union Solvent Socket 2"	0.0446	0.154

Transition Coupling Solvent Socket BS-DIN



Code	Description	Net W. (kg)	Volume (m ³)	Gross W. (kg)	Total Units (1 box)
01900	Transition Coupling Solvent Socket 90 - 3" BS-DIN	0.457	0.02280	7.67	16
01901	Transition Coupling Solvent Socket 110 - 4" BS-DIN	0.698	0.03129	8.95	12
01903	Transition Coupling Solvent Socket 160 - 6" BS-DIN	1.411	0.04879	9.04	6







ATECPPOOL

POOL

COVERS

