

*Inspired
by Water*



PRODUCT
CATALOGUE

2023/2024



**ATECPOL
INTERNATIONAL
GROUP**



Inspired by Water

A global brand with global
responsibility



ISO 9001:2015



Advanced Water Technology

At **Atecpool International Group**, we are committed to providing exceptionally designed and engineered products for your pools, spas, and water features. Establishing trust with our customers and producers, through ensuring excellence and confidence in our transactions, is a priority. **Atecpool International Group** caters to our worldwide customer base through our offices, warehouses, and distribution centres located in 8 countries. Our dedication to innovative products of the highest quality has made us a renowned top-rated international brand, and when accompanied with our emphasis on quality control, we know we only provide our client's the best. Our products are sourced from manufacturers who integrate sleek designs and high-quality engineering, tooling and production. Our decades of experience mean we have perfected the craft of designing, engineering and manufacturing premium equipment and pool accessories for customers internationally.

Atecpool's 45 years of expertise has resulted in advancements which are ahead of industry standards such as our introduction of **A-Connect**, the mobile application which allows hassle-free monitoring and controlling of **Atecpool** equipment from your mobile, and robotic technology for automated cleaning of pools and spas with Hydro-cloud technology . Further advancements are related to our dedication to water-saving and eco-friendly solutions by introducing filtration techniques like Regenerative Filters with fully automated Self-Cleaning Patented Technology inbuilt . Our scope has broadened to provide a range of affordable water solution to the most advanced and sustainable water solutions to suit clients' needs.

We pride ourselves on our active participation in the FINA World Swimming Championship and the Olympic Games; it has been a genuine pleasure to establish and maintain long-lasting relationships with luxury hotels internationally. The astounding support from our valued customers has fueled **Atecpool's** dedication to exceptional standards and industry-leading water solutions. We look forward to continuing to support our international clients and establish new working relationships.

Inspired by water. Enjoy your dreams.

OUR COMPANY

*Inspired
by Water*

ATECPOOL INTERNATIONAL GROUP

In 2002 **ATECPOOL™** Internacional España emerged as the premium swimming pool brand with factories worldwide and our headquarters based in Barcelona, Spain. We revolutionised the pool and water treatment industry with our continuous efforts in innovation and design excellence, and continue to do so to this day. Our factories in Europe, the UK and USA manufacture **ATECPOOL™** brand products of outstanding quality, innovative design, and expertly engineered, which are found in 24 countries worldwide. Our reliable,

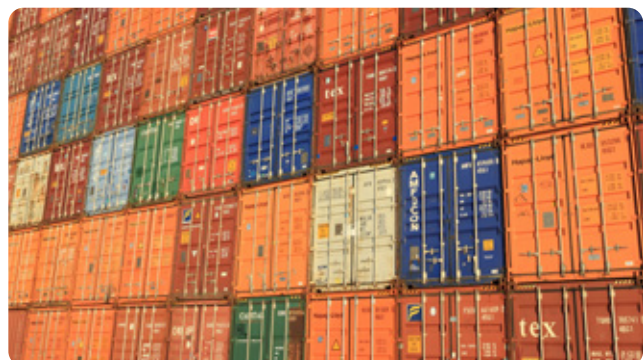
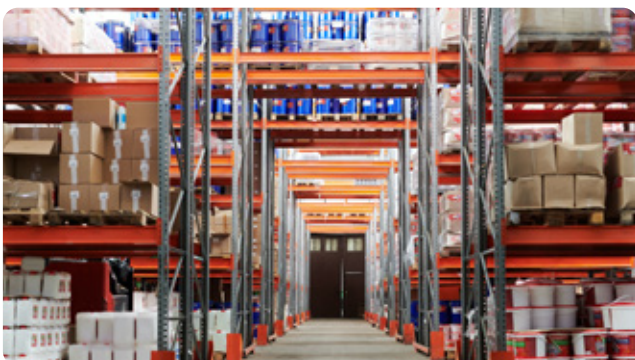
technologically-advanced and ecologically friendly products have been developed to meet all technical needs the market demands while enhancing user friendliness. Our high quality assurance is a characteristic for which we are renowned. At **ATECPOOL™** we offer the best!

OUR COMMITMENT



ATECPOOL™ is passionately committed to our client's satisfaction, through sustainable, technologically-innovative, and eco-friendly solutions. To suit all client's needs, we provide a range of water solutions from affordable to the most advanced and

sustainable, and all technical demands are met with customisation. Our commitment keeps us going and encourages us in our continuous effort of product development.



DESIGN & ENGINEERING



Our Production and Quality Management departments assure excellence in design and the engineered characteristics of all **ATECPOOL™** brand products. **ATECPOOL™** professionals ensure client's satisfaction through our supply of premium, high-end products under our superior quality assurance program. With over 45 years of expertise

in the pool industry, we have witnessed technological advancement in the industry and our own products; the introduction of **A-connect**, our mobile application which allows hassle-free monitoring and controlling of **ATECPOOL™** equipment, makes us pioneers of our industry.



OUR MAIN BRANCHES



**Atecpool
Internacional
España**



**Atecpool
Netherlands**



**Atecpool
International
Group**

Inspired by Water



CATALOGUE OVERVIEW

*Inspired
by Water*

*Inspired
by Water*

NEW
RELEASE

ATECPOOL

A-BOT

AUTOMATIC POOL CLEANER

ATECPOOL presents:
Intelligent Robot with
Hydro-Cloud Technology



*Inspired
by Water*

**NEW
RELEASE**

ATECPOOL

THERMOLITE

ELECTRIC HEATER

ATECPOOL presents:
Inline Electric Water Heater



 **ATECPOOL
INTERNATIONAL
GROUP**



ATECPPOOL INVERPRO PUMP

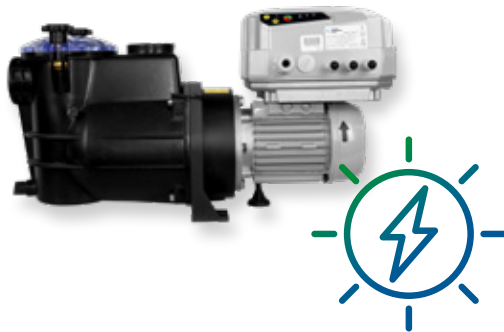
PUMPS CATEGORY

Page n°24



20% times quieter at full capacity

Equipped with Inverter technology, Atecpool InverPro is 20% times quieter than other pumps in the market, down to 36.6 dB(A) at 1m.



ATECPPOOL SOLAR PUMP

PUMPS CATEGORY

Page n°25



Atecpool Solar Pump > The Green Revolution

Centrifugal pump, to be directly connected to solar panels. Or alternatively it can be connected to an electrical grid.



ATECPPOOL SMART SAVER

PUMPS CATEGORY

Page n°48



Atecpool Smart Saver > The Green Revolution

Convert alternating current frequency to another frequency, the result of this conversion leads to a motor speed change in pool pump application



ATECPPOOL REG-X FILTER

POOL FILTRATION CATEGORY

Page n°54



Atecpool Reg-X Filter > Regenerative filter

The Reg-X Regenerative Media Filter uses patented technology to uniquely provide 1 micron filtration performance, compared to the 30-40 micron particles removed in traditional sand filters.



ATECPOOL BALTICO FILTER

POOL FILTRATION CATEGORY

Page n°65

Atecpool Baltico Filter

ATECPOOL Baltico 1.2 M sand bed, laminated fiberglass commercial type for public pools with nozzle plates.



ATECPOOL MEGA INVERTER HP

POOL HEATING CATEGORY

Page n°171

Atecpool Mega Inverter Heat Pump

When maintaining pool temperature at 95% of pool season, the HP is running on 50% capacity which results in the best energy saving performance and most silent pool environment.



ATECPOOL BRIGHTBOT 6000

CLEANING CATEGORY

Page n°357

Atecpool Brightbot Pool Robot

Robotic pool cleaner independently developed by ATECPOOL for private, public, commercial, and other scenarios.



ATECPOOL DEHUMIDIFIER

POOL HEATING CATEGORY

Page n°190

Atecpool Dehumidifier

Atecpool Air Dehumidifier can easily tackle problems that cause condensation and furniture corrosion. Atecpool Air Dehumidifier for indoor pool installation.

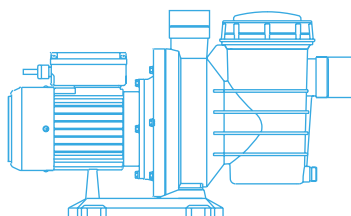


INDEX



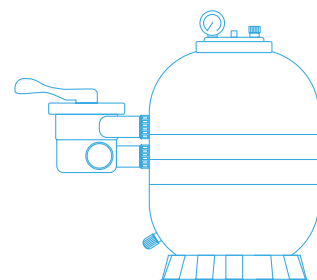
1. A-CONNECT POOL

page 17



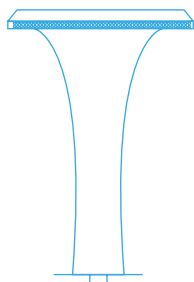
2. PUMPS

page 21



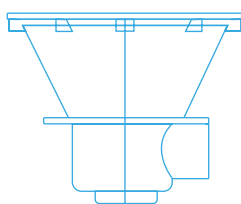
3. FILTRATION

page 51



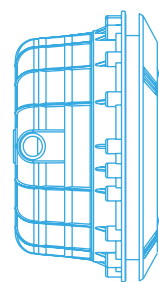
4. POOL SURROUND

page 81



5. POOL & SPA FITTINGS

page 109



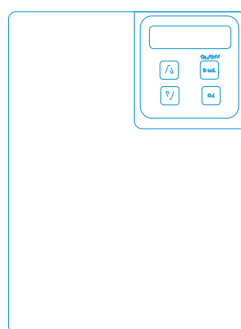
6. POOL LIGHTING

page 127



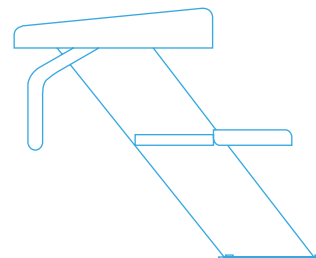
7. POOL HEATING

page 163



8. WATER TREATMENT

page 201

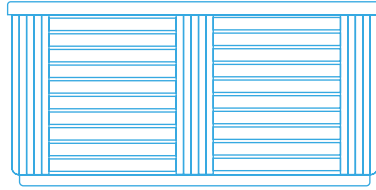


9. COMPETITION EQUIPMENT

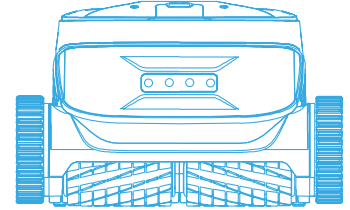
page 241

RAINBOW
by ATECPOOL

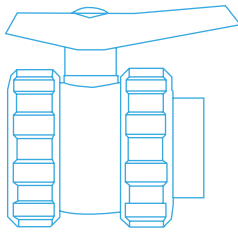
10. RAINBOW FOUNTAIN
page 251



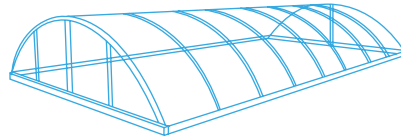
11. WELLNESS
page 301



12. CLEANING EQUIPMENT
page 355



13. VALVES AND UNIONS
page 365



14. POOL COVERS
page 373



15. ATECPOOL GROUP
page 382



ATECPOOL

A-CONNECT



MONITOR & MANAGE YOUR POOL FROM WHEREVER YOU ARE!

*Inspired
by Water*



Atecpool Wi-Fi Pool

Automated pool

Atecpool Wi-Fi Pool

Automatic wifi-connected control system for inground and above-ground swimming pools. Keeping your pool water warm, clean and healthy is child's play with this revolutionary pre-assembled wifi control system. The system is modular and through the use of Smart Plugs Wifipool is the latest revelation in the world of smart pools. Monitoring and managing parameters such as pH and chlorine level, temperature, current and water levels goes like clockwork with our handy app, available for Android and iPhone. Controlling the filter pump via frequency regulator, switching lights on and off and controlling the temperature are all possible with the Wifipool app.

Crystal-clear water with the perfect temperature is just a few clicks away!

Monitor & manage your pool
from wherever you are!



Atecpool Wi-Fi Pool

Automated pool

Atecpool Wi-Fi Pool



Wi-Fi connection



Easy Touch
Easy Run



Automatic wifi control system for built-in pools, aboveground pools and spas

The Atecpool Wifipool Smart Plug can be used to turn on and off virtually any pool equipment, e.g. a filtration pump, dosing pump or UV lamps, etc. In combination with our measurement modules, the Smart Plug can be programmed to start and stop depending on temperature, pH or chlorine levels, etc.

Product	Code	Description
	WIFIPX0100	Wifipool plug 16A power measurement.
	WIFIPX0110	Wifipool plug 10A power measurement.
	WIFIPX0010	Wifipool on/off smart switch without power measurement 16A.
	WIFIPX0020	Wifipool on/off smart switch with power measurement 16A.
	WIFIPX0188	Frequency regulator for filter pump 240V (up to 15kW)
	WIFIPX2355	Wifipool CONNECT GO measuring box for water treatment (pH / RX / Level x2-Flow), expandable to pH and chlorine control.
	WIFIPX2365	Wifipool CONNECT PRO measuring box (pH / RX / Temp x2, Level x2 - Flow), expandable for control of pH, RX and heating.
	WIFIPX2325	Wifipool module RX / flow / level incl probe Platinum + clamp saddle 50mm > 1/2 inch + probe gland + USB transformer plug 1 connection.
	WIFIPX2320	Wifipool module pH / flow / level incl probe + tapping saddle 50mm > 1/2 inch + probe gland + USB transformer plug 1 connection
	WIFIPX2311	Wifipool module TLF (2x temp / flow / level) incl temp probe + clamp saddle 50mm > 1/2 inch + temp probe gland + USB transformer plug 1 connection.

Salt Electrolysis



Smart plug



Rx module

=



Fully automated Salt Electrolysis

pH Dosing



Wi-Fi modified peristaltic pump



pH module

=



Fully automated pH Dosing

Pool Heating



Smart plug



TLF module

=



Fully automated Heat Pump



ATECPOOL

PUMPS

