

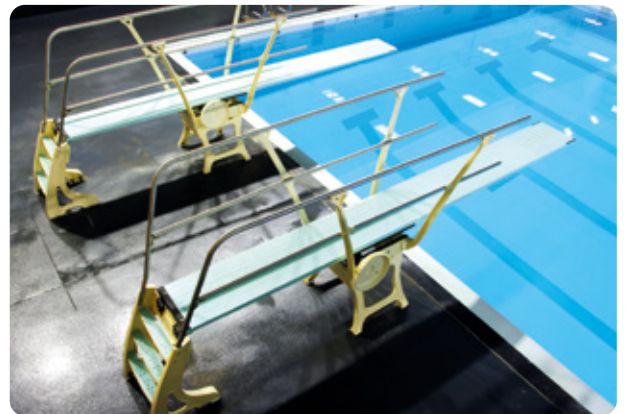
*Inspired
by Water*

**COMPETITION
EQUIPMENT**





COMPETITION EQUIPMENT



“The only board approved by FINA for world championships”

DURAFLEX aluminium springboards have been used exclusively in Olympic diving events since 1960. Duraflex boards and Duraflex stands are used in all major international, national, NCAA and competition diving events.



Powered by



DURAFLEX
Making boards that make champions

Duraflex Aluminium Springboards



Aluminium Springboards

Duraflex aluminium springboards are a one piece ribbed extrusion of heat-treated, aircraft grade aluminium alloy. A torsional stabilizer is attached to the bottom. The boards are coated with a slip-resistant surface. The underside of the board is protected from direct contact with our fulcrum by rubber channels attached to the ribs.

16' MAXIFLEX - MODEL B Springboard

The 16' Maxiflex model B (also called Maxi-B) is the diving board that is used in all major competitive diving events in the world. The Maxi-B is the diving board for facilities that have any competitive diving events.

The 16' Maxi-B is tapered from the fulcrum area to the diving tip, and it is tapered from the fulcrum area to the anchor end. The double-taper allows the whole board to arc while flexing, giving it much more lift than the 16' Duraflex. What distinguishes the Maxi-B from other models is that the board has 189 slots at the tip end.

Code	Description	Length (ft)	Weight (lbs)
66-231-330	Maxiflex Model B Springboard	16'	145

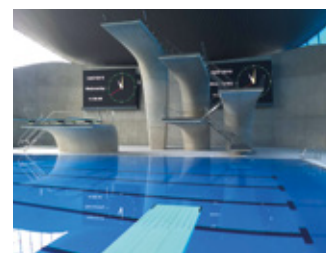
Warning: The pool where these boards will be installed must have diving-well dimensions conforming to FINA, USA Diving, or NCAA minimum dimensions.



16' DURAFLEX Springboard

The 16' Duraflex is used for recreational diving in commercial pools that conform to USA Diving, FINA or NCAA minimum dimensions. They are tapered from the fulcrum area to the diving tip.

Code	Description	Length (ft)	Weight (lbs)
66-231-326	Duraflex 16' Springboard	16'	145



14' DURAFLEX

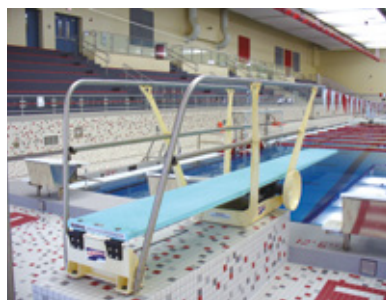
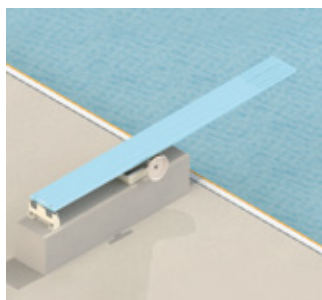
The 14' Duraflex is used for recreational diving in commercial pools that conform to USA Diving, FINA or NCAA minimum dimensions. They are tapered from the fulcrum area to the diving tip.

Code	Description	Length (ft)	Weight (lbs)
66-231-324	Duraflex 14' Springboard	14'	140

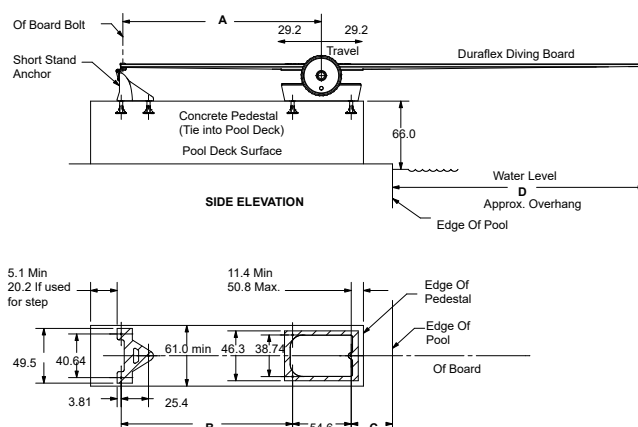


Short Stands

The Duraflex short stand is designed to provide a firm foundation for mounting Duraflex aluminium springboards. The Duraflex short stands are designed to mount on your concrete pedestal or platform. The stand consists of a short stand anchor and a fulcrum assembly. The Duraflex #520 stand also include double stainless steel handrails on both sides. Drawings and CAD blocks are available upon request.



Code	Description	Weight (lbs)
70-231-520	Short Stand with double handrails	335
70-231-524	Short Stand without handrails	125



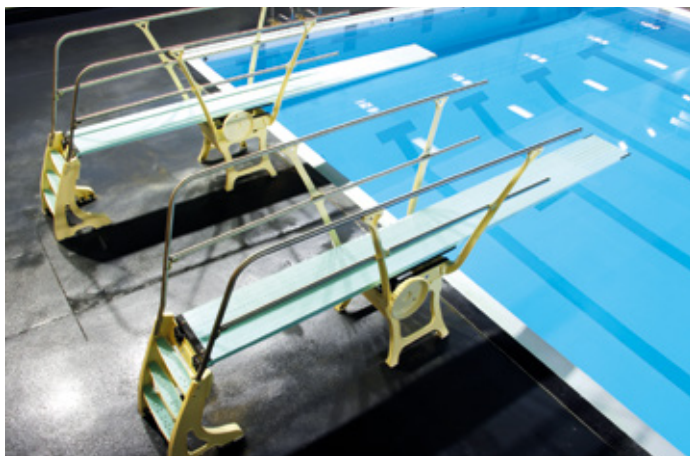
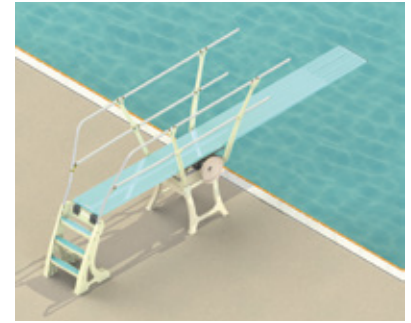
Duraflex 1 and 3 Meter Stands



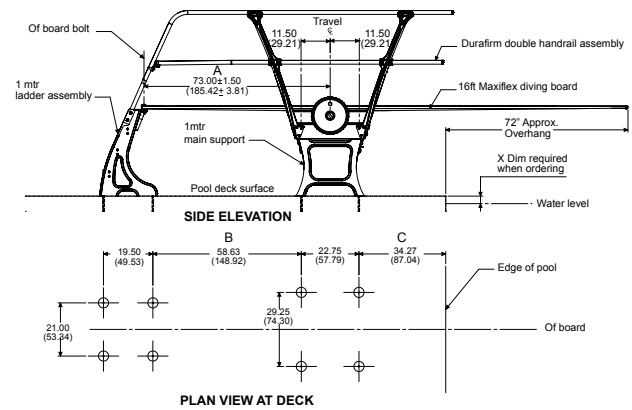
1 Meter Stand

1 Meter Duraflex stand is designed to provide a firm foundation for mounting Duraflex aluminium springboards. The Duraflex stand is the result of design focused on stability, low noise level and ease of installation.

Duraflex stands have double stainless-steel handrails on both sides. The 1-meter structures are manufactured in five different heights to accommodate various deck to water levels. The deck to water dimension of the pool, deck slope and diving board model must be indicated when ordering. This information is used to determine the correct stand height for your facility. Drawings and CAD files can then be provided.



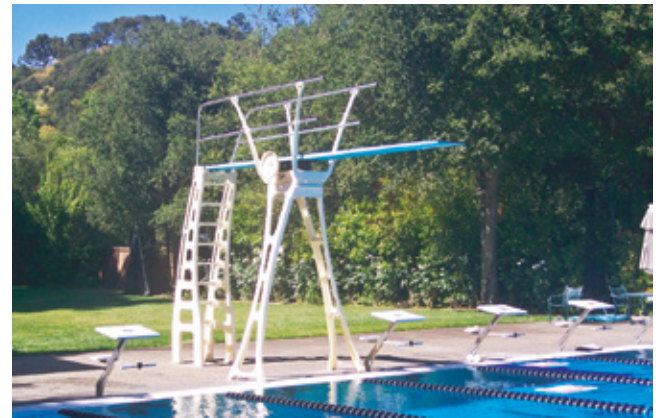
Code	Description	Weight (lbs)
70-231-400	1 Meter Stand with handrails on both sides	420



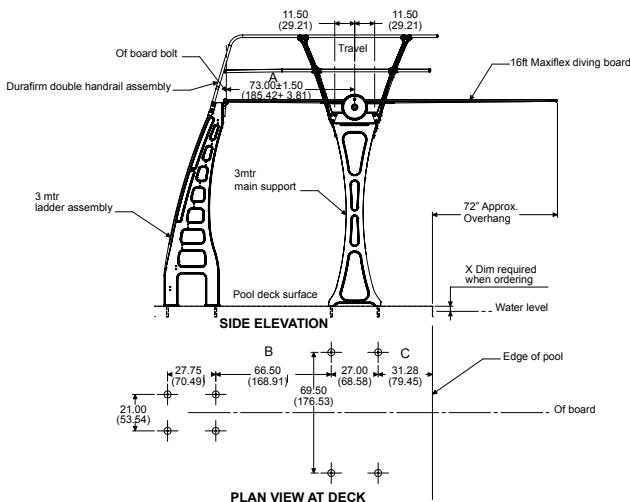
3 Meter Stand

The 3 Meter Duraflex stand is designed to provide a firm foundation for mounting Duraflex aluminium springboards. The Duraflex stand is the result of design focused on stability, low noise level and ease of installation. Built-in handrails on the ladder provide a comfortable grip.

Duraflex stands have double stainless-steel handrails on both sides. The 3-meter structures are manufactured in three heights to accommodate various deck to water levels. The deck to water dimension of the pool, deck slope and diving board model must be indicated when ordering. This information is used to determine the correct stand height for your facility. Drawings and CAD files can then be provided.



Code	Description	Weight (lbs)
70-231-300	3 Meter Stand with handrails on both sides	675



Competition Equipment

Olympic Pool Accesories

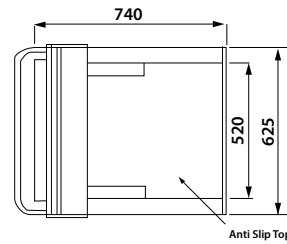
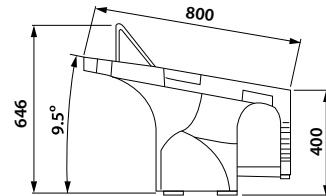
Anti Wave SuperBlock with Track Start

Made of reinforced fiberglass, these are the premium starting blocks for top performance training and competition venues. 800x625 mm antislip platform surface with AISI 316 fittings. Backstart handles reinforced with AISI 316 for safety and durability. Compatible with major electronic timing systems (including Omega RBD). Produced by SMC machine moulding, same production method as current Omega OSB block range.



Specifications

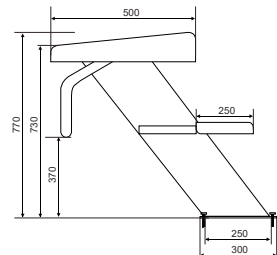
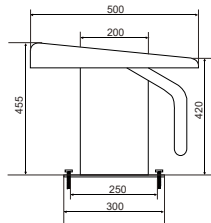
- Movable Track Start, adjustable to 5 positions.
- Durable, long life anti-slip top tread.
- Safe start handles for fast start and safety.



Code	Description	Height (mm)	Weight (kg)	Volume (m ³)
13034080	Super Block with Track Start	400	50	0.42

Starting Block with Adjustable Platform

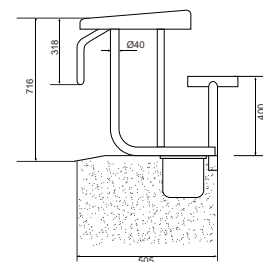
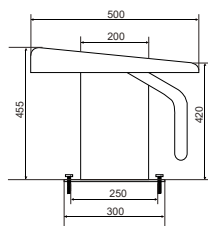
Made of stainless steel AISI 316 with adjustable platform 500 x 500 mm in polyester and fibreglass with non-slip finish. Plate Anchoring in stainless steel AISI 316 included. Number sequence to be requested separately. Available in two heights - 400 and 700 mm.



Code	Description	Height (mm)	Weight (kg)	Volume (m ³)
13034082	Starting Block 400 MM w/adjustable platform	400	18	0.11
13034083	Starting Block 700 MM w/adjustable platform	700	32	0.34

Atecpool Starting Block with Fixed Platform

Made of stainless steel AISI 316 with fixed platform 500 x 500 mm in polyester and fibreglass with non-slip finish. Tube Anchoring in stainless steel AISI 316 not included. Number sequence to be requested separately. Available in two heights - 400 and 700 mm.



Code	Description	Height (mm)	Weight (kg)	Volume (m ³)
13034084	Starting Block 400 MM w/fixed platform	400	18	0.11
13034085	Starting Block 700 MM w/fixed platform	700	25	0.34

Competition Equipment

Olympic Pool Accessories

Anti Wave Maxi Lanes

MAXI 150mmØ and MIDI 110mmØ racing lanes are designed for optimal water dissipation and wave control in high turbidity. MAXI 150 mmØ model used in FINA World Cup, Olympics Games and other top venues. Both MAXI and MIDI use cable SS316 with diameter of 3.1mm and max force of 5kn - allowing higher tension and more effective wave dissipation for the worlds fastest pools. All discs are made from UV stabilized advanced co-polymer thermoplastics.

Anti Wave Lanes MAXI 150mm Ø and MIDI 110mm Ø are supplied fully assembled with SuperTensioner, Long Clamp and SS Hook, ready for installation.



SuperTensioner



Anti Wave Racing Lanes Assembly

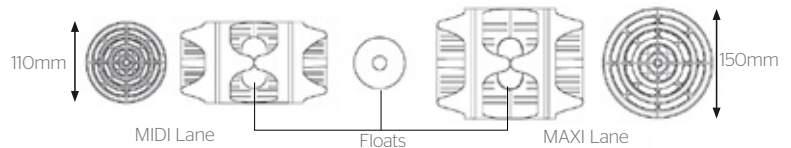


Long Clamp with SS Hook

Code	Description	Length (m)
13039090	Float Lane 12.5 MIDI 110 mm Competition	12.5
13039094	Float Lane 25 MIDI 110 mm Competition	25
13039095	Float Lane 50 MIDI 110 mm Competition	50

Code	Description	Length (m)
13039077	Float Lane 25 MAXI 150 mm Competition	25
13039067	Float Lane 50 MAXI 150 mm Competition	50

- Standard colours: Red 5 m ends with White and Blue 1 m alternating sections. 25 m Lanes orders have red marks at 15m position, 50 m orders have red marks at the 15 m, and 25 m positions.
- FINA Multicolour: available on request, customs colours available on request.



Lane Rope Standard

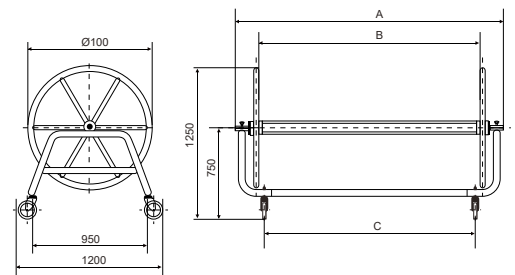
Standard model is available in 25 m, 50 m or any custom length. Lane supplied with doughnut floats dimension Ø68 mm, stainless steel cord 6 mm and a hook. Red and white colour combinations Floats : Polyethylene free from heavy metals.



Code	Description	Length (m)	No. of donut floats
13039091	Float Lane 12.5 M STD	12.5	276
13039092	Float Lane 25 M STD	25	552
13039093	Float Lane 50 M STD	50	1105

Lane Rope Roller

Storage for lane ropes. Made in stainless steel AISI 316 with 4 castor wheels for easy movement. Available in 1200 mm and 1800 mm width.



Capacity - quantity of lane ropes collected in each roller

Code	Description	A (mm)	B (mm)	C (mm)	Weight (kg)	Volume (m³)
13037071	Lane Rope Roller 1200 mm	1590	1200	1150	9	0,07
13037072	Lane Rope Roller 1800 mm	2190	1800	1750	13	0,09

Model	1200 mm		1800 mm	
	25 m	50 m	25 m	50 m
Lane Rope Standard Competition	4	2	6	3
Lane Rope Standard	8	4	12	6

Competition Equipment

Olympic Pool Accessories

Lane Rope Anchor

Used for pools with gutter at the floor level. Dimension Ø40 mm, height 165 mm, and made of Stainless Steel AISI 316. Lane anchor to be equipped with a hook for attachment of lane ropes onto the pool deck.



Code	Description	Height (mm)	Weight (kg)	Volume (m³)	Std packing
13037081	Lane Rope Anchor	165	0.60	0.003	2

Lane Rope Anchor Cup with central rod

Used for pools with water level below the floor level. Made of S.S. AISI 316. Lane anchor cup to be equipped with a hook for attachment of lane ropes.



Code	Description	Weight (kg)	Volume (m³)	Std packing
13030016	Lane Rope Anchor w/ Central Rod	0.8	0.002	2

Lane Rope Anchor Cup Retractable

Used for pools with water level below the floor level. Made of S.S. AISI 316. Lane anchor cup to be equipped with a hook for attachment of lane ropes.



Code	Description	Weight (kg)	Volume (m³)	Std packing
13030019	Lane Rope Anchor Cup Retractable	0.98	0.002	2

SuperTensioner

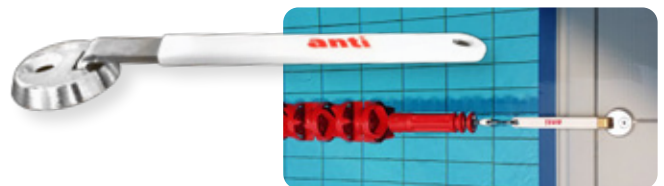
Stainless Steel rod with brass ferrule and glass-filled polycarbonate body construction. Cable is SS316 with diameter of 3.1 mm and max force of 5Kn. Body length including lock nut is 230 mm.



Code	Description	Length (mm)
13039097	Lane Rope Tensioner	230

Overflow Lane Anchor

Overflow Lane Anchor SS 316 has a safe low profile on the pool deck and its 215 mm arm is rubber coated to ensure pool tiles are not damaged.



Code	Description	Length (mm)
13037089	Overflow Lane Anchor	215

Lane Rope Hook

Made of Stainless Steel AISI 316.



Code	Description	Weight (kg)	Volume (m³)	Std packing
13037082	Lane Rope Hook	2	0.002	25

Lane Rope Ratchet

Made of Stainless Steel AISI 316.



Code	Description	Weight (kg)	Volume (m³)	Std packing
13037090	Lane Rope Ratchet	0.8	0.002	1

Competition Equipment

Olympic Pool Accessories

False Start Indicators

Includes 2 posts in stainless steel AISI 316, cord and floats. No anchors included. Available in two different widths. Height 1800 mm. Ø43mm posts for pool width upto 12.5 meters and Ø48mm posts for pool width above 12.5 meters.



Code	Description	Weight (kg)	Std Packing
13034090	False Start Indicator Width 12.5m	49	1
13034097	False Start Indicator Width 25m	77	1

Note: Anchoring Sockets 13030015 / 13030018 or 13030017 / 13030019 to be ordered separate for the posts.

Backstroke Turn Indicators

Includes 4 posts in stainless steel AISI 316, cord and thick PVC flags (4 nos every meter). No anchors included. Available in two different widths. Height 1800 mm. Ø43 mm posts for pool width upto 12.5 m and Ø48 mm posts for pool width above 12.5 m.

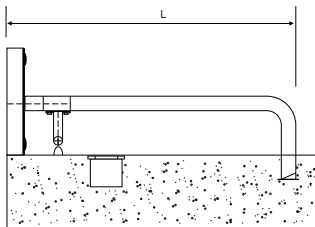


Code	Description	Weight (kg)	Std Packing
13034095	Backstroke Turn Indicator 4 Post W 12.5m	11.9	1
13034093	Backstroke Turn Indicator 4 Post W 25m	22.7	1

Note: Anchoring Sockets 13030015 / 13030018 or 13030017 / 13030019 to be ordered separately for the posts.

Support for Turning Panel

Support for Turning panel in S.S. AISI 316. Custom length (L) based on request. 2 units for each turning panel



Code	Description	Weight (kg)	Std Packing
13034005	Support for Turning Panel AISI 316	5.5	1

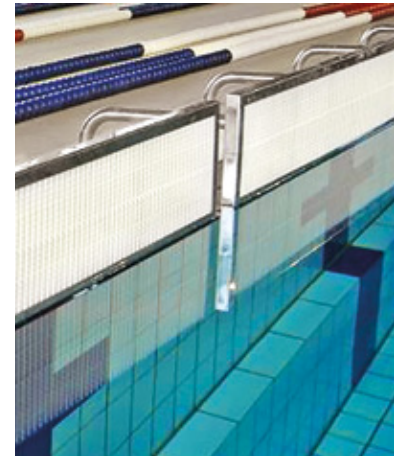
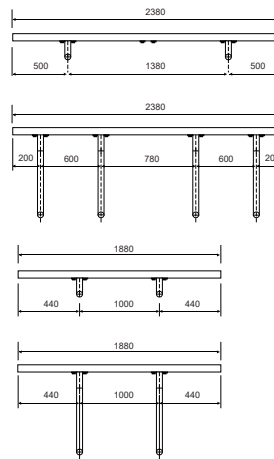
Anchoring Socket - Angled

Angled anchoring socket in S.S. AISI 316. For Ø43 mm and Ø48 mm post.

Code	Description	Weight (kg)	Std Packing
13030018	Anchoring Socket Angled 43mm	1.6	2
13030020	Anchoring Socket Angled 48mm	1.75	2

Turning Panels

Stainless steel AISI 316 turning panel with ABS lattice. Height 300 mm. No support included.



Code	Description	Weight (kg)	Std Packing
13034008	Turning Panel Width 2m	14.2	1
13034009	Turning Panel Width 2.5m	17.1	1

Anchoring Socket - Flat

Flat anchoring socket in S.S. AISI 316. For Ø43 mm and Ø48 mm post



Code	Description	Weight (kg)	Std Packing
13030015	Anchoring Socket Flat 43mm	1.7	2
13030017	Anchoring Socket Flat 48mm	1.81	2

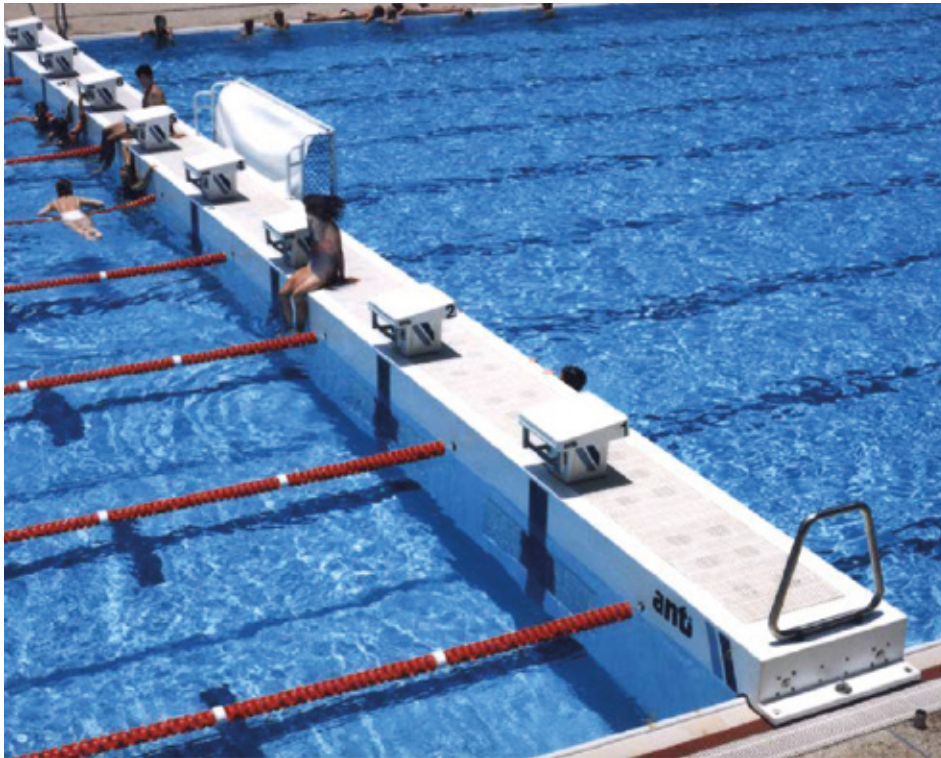


Competition Equipment

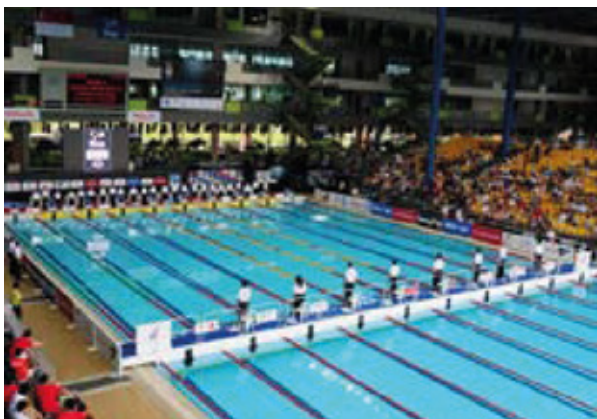
Movable Bulkhead

Anti Wave Motorised Bulkhead AWE043

The Anti Wave Movable Bulkhead sets the international standard for Bulkhead pool configuration and programmability. Anti Wave has developed a high-precision corrosion resistant bulkhead that successfully meets all international regulations making it essential to the swimming community. Bulkhead motorisation began in 1985 and is still in operation, leading the world in reliability and operation.



Innovation and Durability • Anti Movable Bulkhead installed Brisbane Valley 1985 and still in service today



FINA World Cup Singapore 2012



Motorised Bulkhead



ATECPOOL

RAINBOW

FOUNTAIN

RAINBOW
by **ATECPOOL**